

SECOND AMENDMENT TO DECLARATION OF CONDOMINIUM
OF COVERED BRIDGE CONDOMINIUM

Title of Document

DANE COUNTY
REGISTER OF DEEDS

3349217

07-18-2001 3:18 PM

Trans. Fee

Rec. Fee 32.00

Pages 12

001891

Return to:

MILLER CONSTRUCTION, INC.
2318 VONDRON ROAD
MADISON, WI 53718

Parcel Identification Number:

SEE ATTACHED



First American Title Insurance Company
P.O. Box 5512, 3330 UNIVERSITY AVENUE, 2nd FLOOR, MADISON WISCONSIN 53705

12/32

**SECOND AMENDMENT TO DECLARATION OF CONDOMINIUM
OF COVERED BRIDGE CONDOMINIUM**

001892

The undersigned Miller Construction, Inc., a Wisconsin Corporation, declarant of Covered Bridge Condominium, a condominium created by declaration of condominium recorded October 27, 2000 as document number 3261830 on pages 431-451, Dane County Register of Deeds, and by Condominium Plat for Covered Bridge Condominium recorded in Vol. 3-117A of condominium plats, pages 1-3, document number 3261831, Dane County Register of Deeds, do hereby amend said declaration of condominium as previously amended:

1. Exhibit IV of the Declaration of Condominium of Covered Bridge Condominium is hereby amended to indicated that the common element ownership and share of common expenses which shall be appurtenant and shall be conveyed with each unit is as follows:

<u>Unit</u>	<u>Common Unit Element Owner</u>	<u>Share of Common Expenses</u>
1	1 17/33%	1 17/33%
2	1 17/33%	1 17/33%
5	1 17/33%	1 17/33%
6	1 17/33%	1 17/33%
7	1 17/33%	1 17/33%
8	1 17/33%	1 17/33%
9	1 17/33%	1 17/33%
11	1 17/33%	1 17/33%
501	1 17/33%	1 17/33%
503	1 17/33%	1 17/33%
505	1 17/33%	1 17/33%
507	1 17/33%	1 17/33%
509	1 17/33%	1 17/33%
511	1 17/33%	1 17/33%
601	1 17/33%	1 17/33%
603	1 17/33%	1 17/33%
604	1 17/33%	1 17/33%
605	1 17/33%	1 17/33%
606	1 17/33%	1 17/33%
607	1 17/33%	1 17/33%
608	1 17/33%	1 17/33%

609	1 17/33%	1 17/33%
610	1 17/33%	1 17/33%
611	1 17/33%	1 17/33%
612	1 17/33%	1 17/33%
613	1 17/33%	1 17/33%
614	1 17/33%	1 17/33%
615	1 17/33%	1 17/33%
616	1 17/33%	1 17/33%
617	1 17/33%	1 17/33%
618	1 17/33%	1 17/33%
619	1 17/33%	1 17/33%
620	1 17/33%	1 17/33%
621	1 17/33%	1 17/33%
622	1 17/33%	1 17/33%
623	1 17/33%	1 17/33%
624	1 17/33%	1 17/33%
625	1 17/33%	1 17/33%
627	1 17/33%	1 17/33%
701	1 17/33%	1 17/33%
703	1 17/33%	1 17/33%
704	1 17/33%	1 17/33%
705	1 17/33%	1 17/33%
706	1 17/33%	1 17/33%
707	1 17/33%	1 17/33%
708	1 17/33%	1 17/33%
709	1 17/33%	1 17/33%
710	1 17/33%	1 17/33%
712	1 17/33%	1 17/33%
713	1 17/33%	1 17/33%
714	1 17/33%	1 17/33%
716	1 17/33%	1 17/33%
6302	1 17/33%	1 17/33%
6303	1 17/33%	1 17/33%
6304	1 17/33%	1 17/33%
6305	1 17/33%	1 17/33%
6306	1 17/33%	1 17/33%
6307	1 17/33%	1 17/33%
6309	1 17/33%	1 17/33%
6311	1 17/33%	1 17/33%
6313	1 17/33%	1 17/33%
6315	1 17/33%	1 17/33%

001893

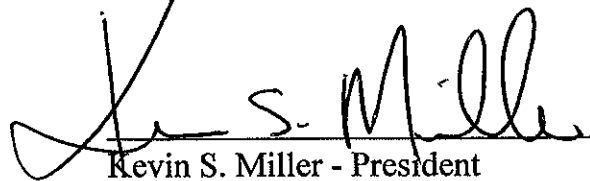
6316	1 17/33%	1 17/33%
6317	1 17/33%	1 17/33%
6318	1 17/33%	1 17/33%
6321	1 17/33%	1 17/33%

001894

2. Each unit is entitled to one (1) vote in the association, as expanded, pursuant to the Declaration of Condominium.
3. Attached hereto and made a part hereof is Addendum Two to Covered Bridge Condominium, a condominium plat.
4. This document revises the First Amendment to Declaration of Condominium of Covered Bridge Condominium which incorporates a partially inaccurate numbering of units shown on Covered Bridge Condominium Addendum One. Said Addendum One listed two different units as being "Unit 703" and two different units as being "Unit 613." The attached Covered Bridge Addendum Two corrects that duplication by renumbering one heretofore "Unit 703" as "Unit 701" and one heretofore "Unit 613" as "Unit 6302."

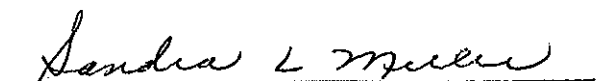
Dated this 11 day of July, 2001.

Miller Construction, Inc.


 Kevin S. Miller - President

STATE OF WISCONSIN }
 } ss
 COUNTY OF DANE }

Personally came before me this 11 day of July, 2001, Miller Construction, Inc., by Kevin S. Miller, to me known to be the person who executed the foregoing and acknowledged the same.


 Notary Public, Dane County, WI
 My commission Jan 30 2005

CONSENT OF MORTGAGEE

001895

The undersigned AnchorBank SSB, Mortgagee, hereby consents to the foregoing Second Amendment to Declaration of Condominium of Covered Bridge Condominium this 11th day of July, 2001.

AnchorBank SSB

W. Ganshert

By:

STATE OF WISCONSIN }
COUNTY OF DANE } SS

Personally came before me this 11th day of July, 2001, AnchorBank SSB, by W. GANSHERT, to me known to be the person who executed the foregoing and acknowledged the same.

Leann M. Rau 11
Notary Public, Dane County, WI
My commission 9-23-01

This document was drafted by
Atty. Robert W. Kuehling
Kuehling & Kuehling
131 W. Wilson St., Suite 501
Madison, WI 53703

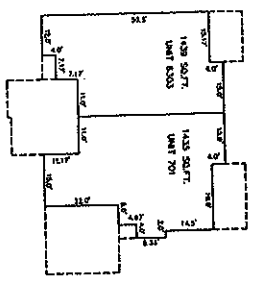
COVERED BRIDGE CONDOMINIUM APPENDUM TWO

A CONDOMINIUM PLAT, DANE COUNTY, WISCONSIN

RECORDED IN VOLUME _____ OF CONDOMINIUM
 PLATS ON PAGE _____ AS DOCUMENT NUMBER _____

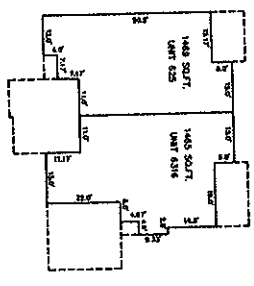
9
8
7
6
5
4
3
2
1
0

BASEMENT PLAN
 (PER BUILDING PLAN) SCALE 1"=30'



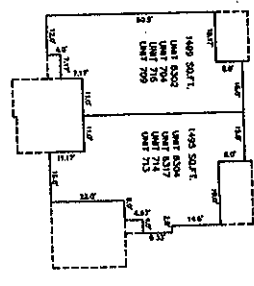
LOT 39

BASEMENT PLAN
 (PER BUILDING PLAN) SCALE 1"=30'



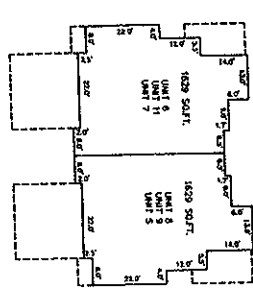
LOT 102

BASEMENT PLAN
 (PER BUILDING PLAN) SCALE 1"=30'

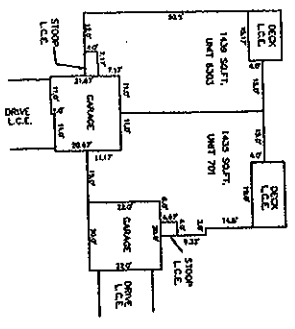


LOTS 29, 32, 35, 90

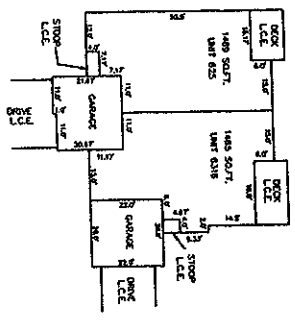
BASEMENT PLAN
 (PER BUILDING PLAN) SCALE 1"=30'



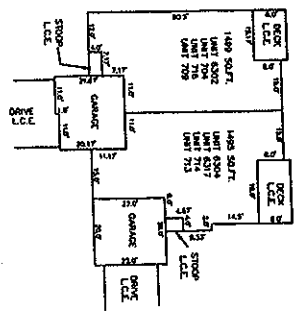
LOTS 24, 25, 26



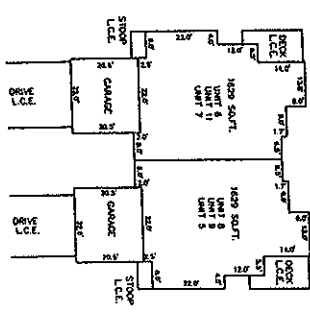
FIRST FLOOR PLAN
 (PER BUILDING PLAN) SCALE 1"=30'



FIRST FLOOR PLAN
 (PER BUILDING PLAN) SCALE 1"=30'

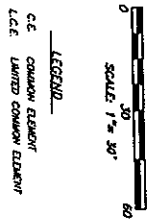


FIRST FLOOR PLAN
 (PER BUILDING PLAN) SCALE 1"=30'



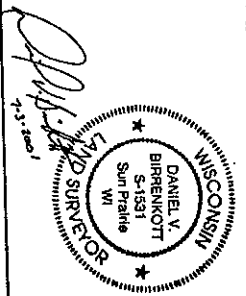
FIRST FLOOR PLAN
 (PER BUILDING PLAN) SCALE 1"=30'

LOT NUMBER	UNIT NUMBERS
1	201 - 203
2	204 - 206
3	207 - 209
4	210 - 212
5	213 - 215
6	216 - 218
7	219 - 221
8	222 - 224
9	225 - 227
10	228 - 230
11	231 - 233
12	234 - 236
13	237 - 239
14	240 - 242
15	243 - 245
16	246 - 248
17	249 - 251
18	252 - 254
19	255 - 257
20	258 - 260
21	261 - 263
22	264 - 266
23	267 - 269
24	270 - 272
25	273 - 275
26	276 - 278
27	279 - 281
28	282 - 284
29	285 - 287
30	288 - 290
31	291 - 293
32	294 - 296
33	297 - 299
34	300 - 302
35	303 - 305
36	306 - 308
37	309 - 311
38	312 - 314
39	315 - 317
40	318 - 320
41	321 - 323
42	324 - 326
43	327 - 329
44	330 - 332
45	333 - 335
46	336 - 338
47	339 - 341
48	342 - 344
49	345 - 347
50	348 - 350
51	351 - 353
52	354 - 356
53	357 - 359
54	360 - 362
55	363 - 365
56	366 - 368
57	369 - 371
58	372 - 374
59	375 - 377
60	378 - 380
61	381 - 383
62	384 - 386
63	387 - 389
64	390 - 392
65	393 - 395
66	396 - 398
67	399 - 401
68	402 - 404
69	405 - 407
70	408 - 410
71	411 - 413
72	414 - 416
73	417 - 419
74	420 - 422
75	423 - 425
76	426 - 428
77	429 - 431
78	432 - 434
79	435 - 437
80	438 - 440
81	441 - 443
82	444 - 446
83	447 - 449
84	450 - 452
85	453 - 455
86	456 - 458
87	459 - 461
88	462 - 464
89	465 - 467
90	468 - 470
91	471 - 473
92	474 - 476
93	477 - 479
94	480 - 482
95	483 - 485
96	486 - 488
97	489 - 491
98	492 - 494
99	495 - 497
100	498 - 500



LEGEND
 C.C. COMMON ELEMENT
 L.C.E. LIMITED COMMON ELEMENT

- NOTES:**
- 1) BUILDING PERMITS, SPECIAL OR UNIT FLOOR PLANS ARE PER PLANS PROVIDED.
 - 2) ALL AREAS OUTSIDE OF BUILDINGS ARE COMMON ELEMENTS UNLESS OTHERWISE NOTED.
 - 3) ALL AREAS OUTSIDE OF BUILDINGS ARE COMMON ELEMENTS UNLESS OTHERWISE NOTED.
 - 4) UNIT AREAS ARE APPROXIMATE AND DO NOT SUPERSEDE UNIT BOUNDARIES AS SET FORTH IN THE CONDOMINIUM DECLARATION.



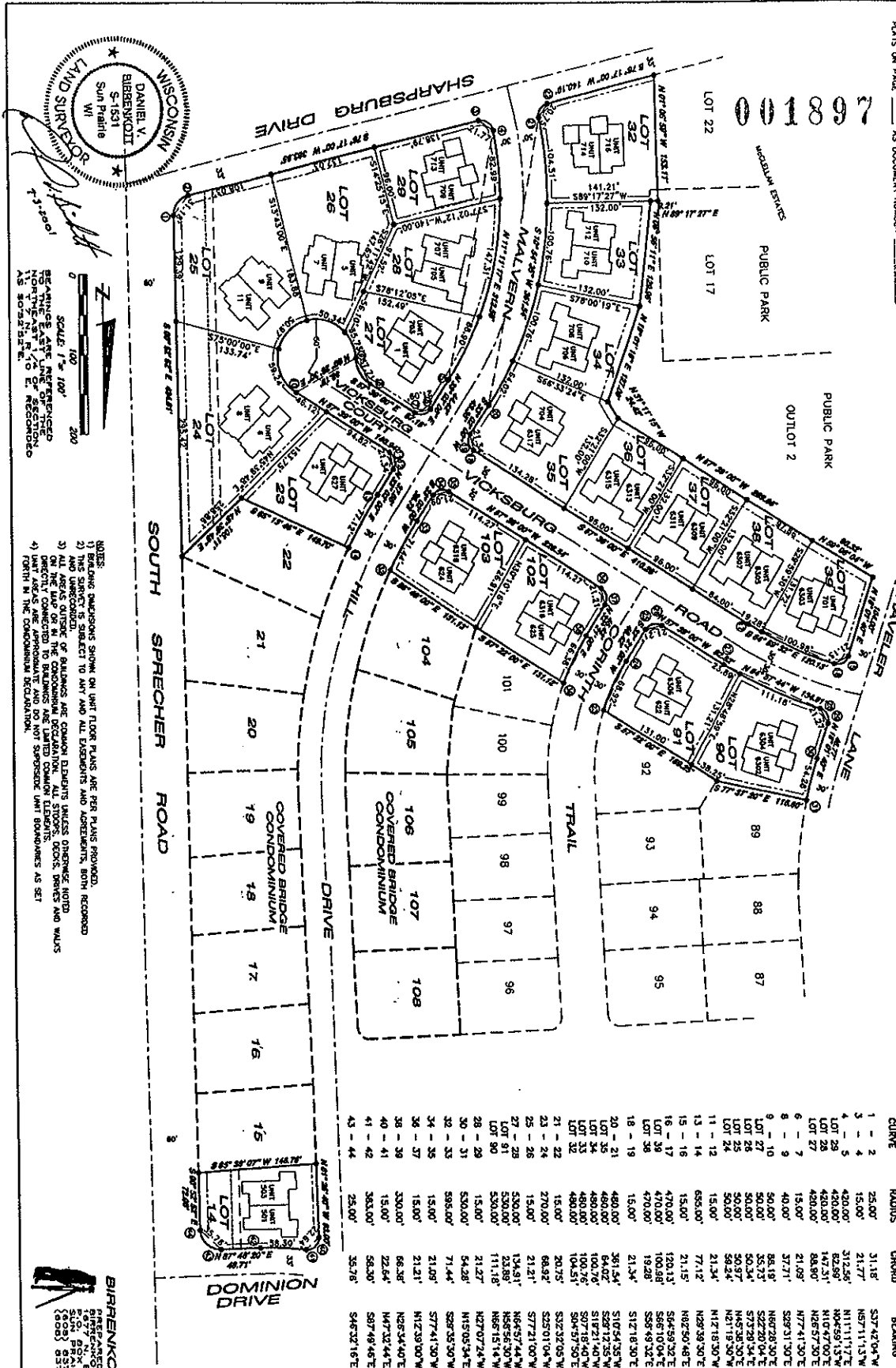
BIRENKOTT SURVEYING INC.
 5077 BIRKENHEAD DRIVE
 SUITE 200
 MADISON, WI 53718
 (608) 837-1081 FAX
 (608) 837-1081 FAX

SHEET 6 OF 6
 OFFICE MAP NO. 000893B

001892

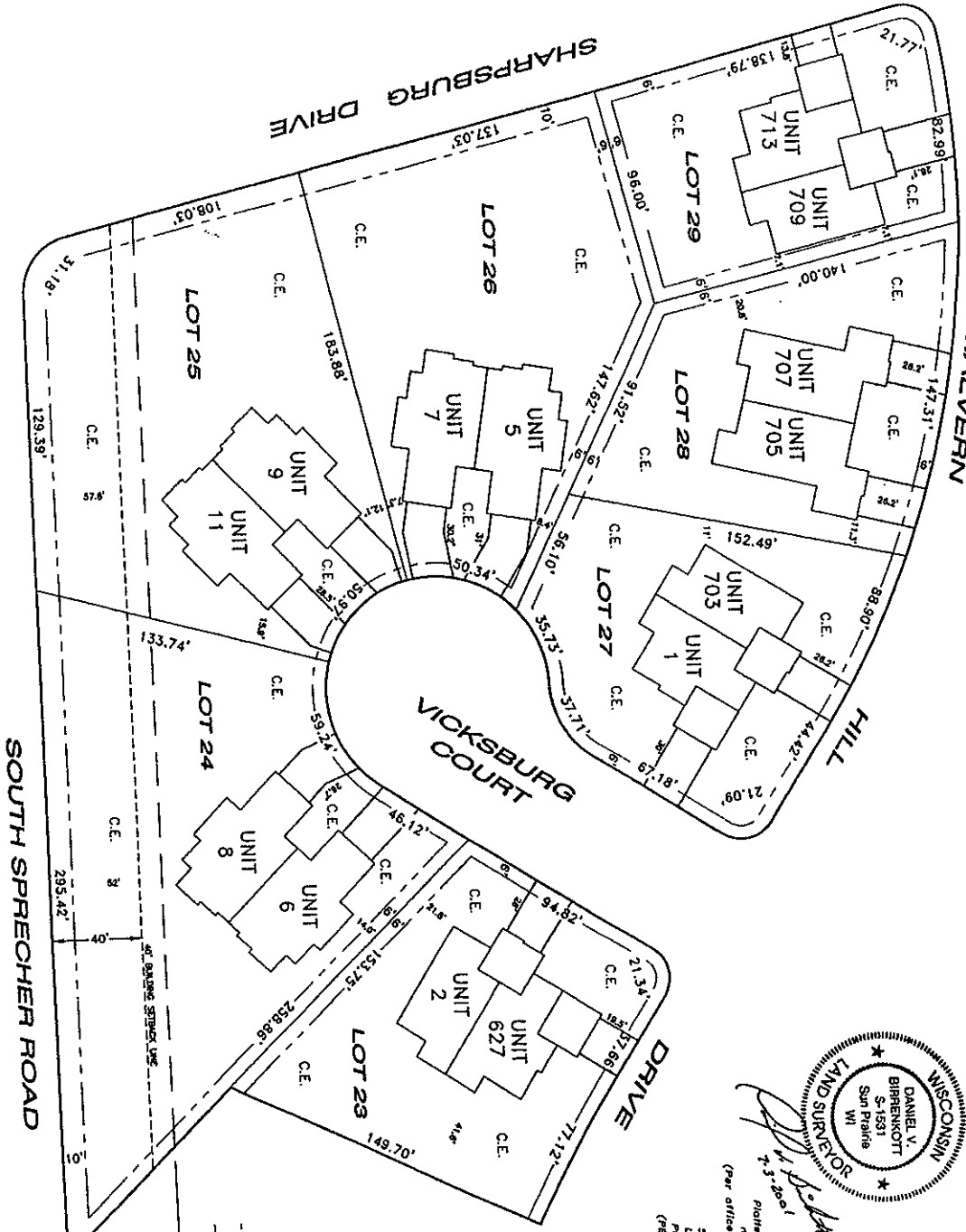
COVERED BRIDGE CONDOMINIUM ADDENDUM TWO

A CONDOMINIUM PLAT, DANE COUNTY, WISCONSIN



COVERED BRIDGE CONDOMINIUM APPENDUM TWO
 A CONDOMINIUM PLAT, DANE COUNTY, WISCONSIN

001898

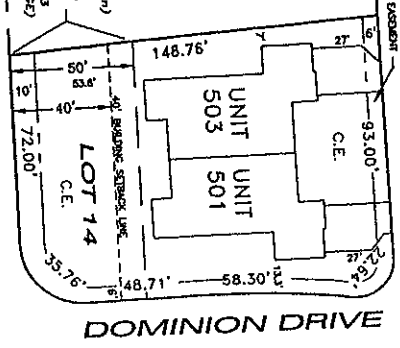


WISCONSIN
 DANIEL V. BIRENKOTT
 S-1531
 Sun Prairie
 WI
 LAND SURVEYOR

(Signature)
 7.3.2001

Plotted Down Guy Easement
 no longer in effect
 (Per office of Fred Miller Construction)
 50' ELECTRIC TRANSMISSION
 LINE EASEMENT VOL. 21362
 PGS. 62-66, DOC. #2427013
 (PER PLAT OF COVERED BRIDGE)

SOUTH SPRECHER ROAD



LEGEND
 --- COMMON ELEMENT
 --- 40' BUILDING SETBACK LINE
 --- UTILITY EASEMENT (SIZE INDICATED)

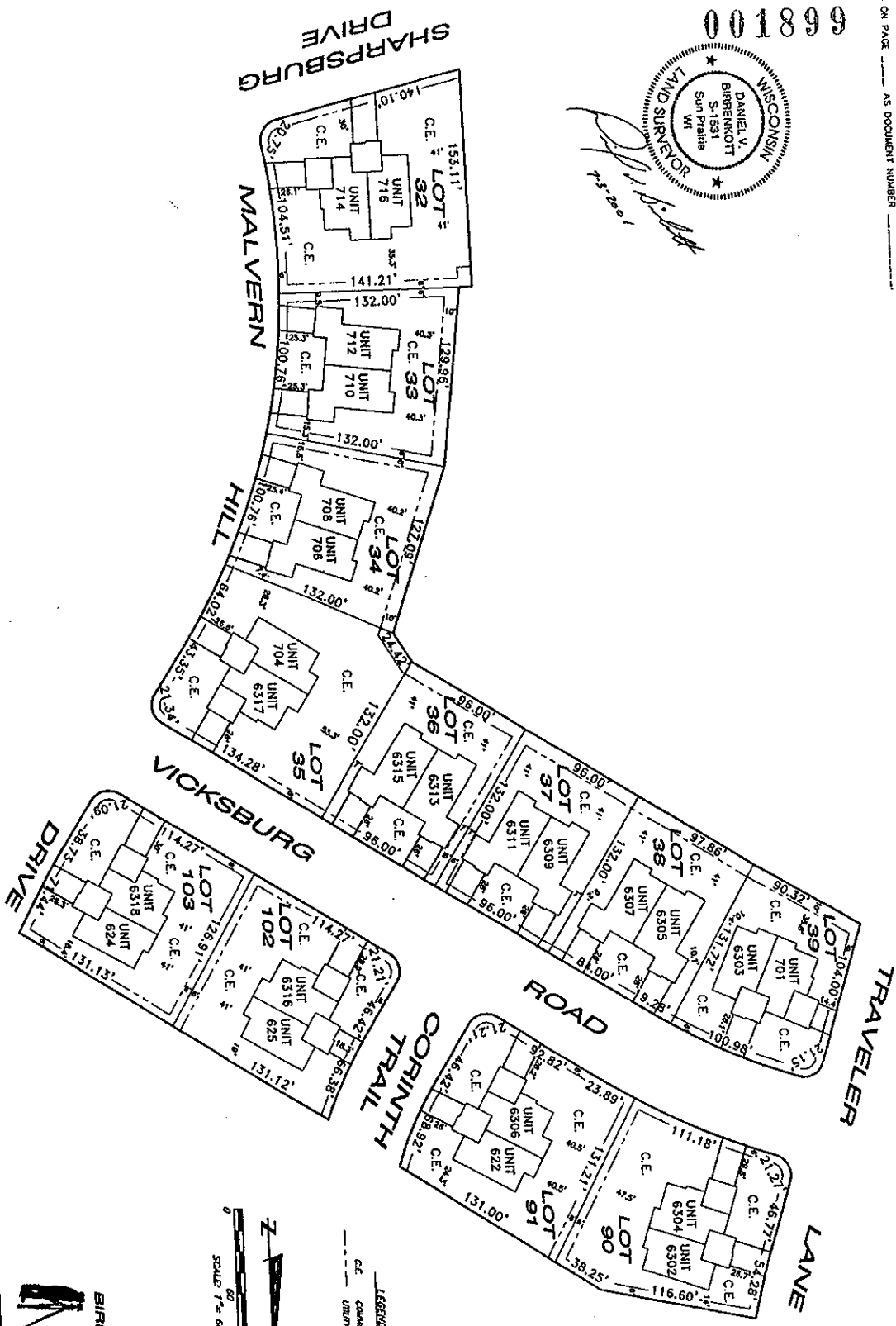
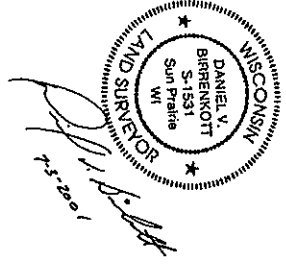
50' ELECTRIC TRANSMISSION
 LINE EASEMENT VOL. 21362
 PGS. 62-66, DOC. #2427013
 (PER PLAT OF COVERED BRIDGE)

BIRENKOTT SURVEYING INC.
 BIRENKOTT, DANIEL V., SURVEYOR
 507 N. GENESEE STREET
 SUN PRAIRIE, WI 53190
 (608) 531-1081
 (608) 531-1081 FAX
 SHEET 3 OF 6
 OFFICE MAP NO. 0008928

RECORDED IN VOLUME _____ OF CONDOMINIUM PLATS ON PAGE _____ AS DOCUMENT NUMBER _____

COVERED BRIDGE CONDOMINIUM APPENDUM TWO
 A CONDOMINIUM PLAT, DANE COUNTY, WISCONSIN

668100



LEGEND
 C.E. COMMON ELEMENT (SIZE INDICATED)
 UNIT ELEMENT (SIZE INDICATED)



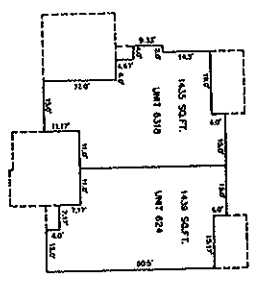
BIRRENKOTT SURVEYING INC.
 BIRRENKOTT SURVEYING INC.
 875 SOUTH STREET
 SUITE 100
 MADISON, WI 53703
 (608) 837-1081 FAX
 (608) 837-1081 FAX
 SHEET 4 OF 6
 OFFICE MAP NO. 0008938

COVERED BRIDGE CONDOMINIUM APPENDUM TWO

A CONDOMINIUM PLAT, DANE COUNTY, WISCONSIN

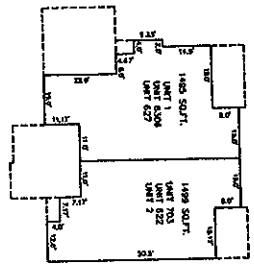
RECORDED IN VOLUME _____ OF CONDOMINIUM
PLATS ON PAGE _____ AS DOCUMENT NUMBER _____

BASEMENT PLAN
(PER BUILDING PLAN) SCALE 1"=30'



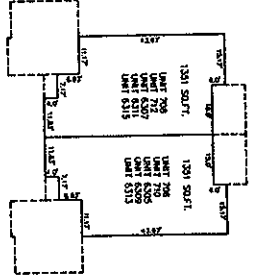
LOT 103

BASEMENT PLAN
(PER BUILDING PLAN) SCALE 1"=30'



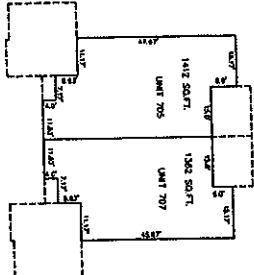
LOTS 23, 27, 91

BASEMENT PLAN
(PER BUILDING PLAN) SCALE 1"=30'



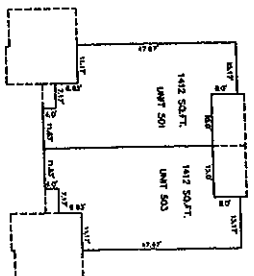
LOTS 33, 34, 36, 37, 38

BASEMENT PLAN
(PER BUILDING PLAN) SCALE 1"=30'



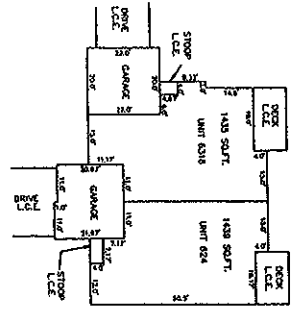
LOT 28

BASEMENT PLAN
(PER BUILDING PLAN) SCALE 1"=30'

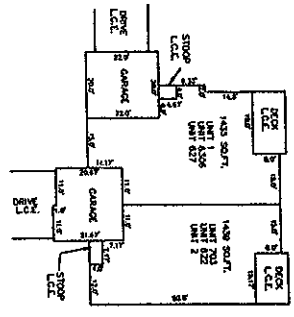


LOT 14

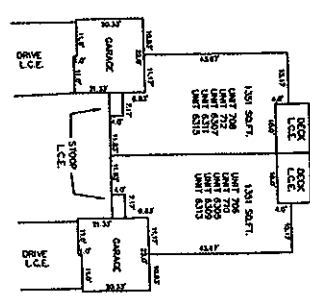
FIRST FLOOR PLAN
(PER BUILDING PLAN) SCALE 1"=30'



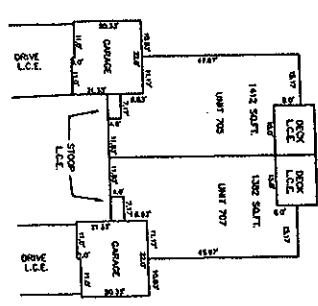
FIRST FLOOR PLAN
(PER BUILDING PLAN) SCALE 1"=30'



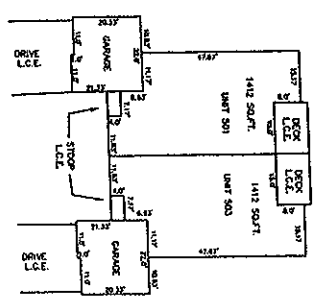
FIRST FLOOR PLAN
(PER BUILDING PLAN) SCALE 1"=30'



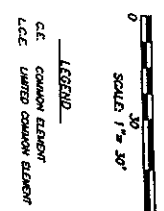
FIRST FLOOR PLAN
(PER BUILDING PLAN) SCALE 1"=30'



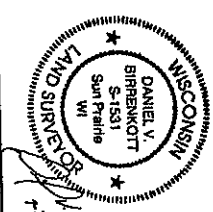
FIRST FLOOR PLAN
(PER BUILDING PLAN) SCALE 1"=30'



LOT NUMBER	UNIT NUMBERS
103	624, 639
23, 27, 91	629, 702, 703, 704
33, 34, 36, 37, 38	630, 631, 632, 633, 634, 635, 636, 637, 638, 639, 640, 641, 642, 643, 644, 645, 646, 647, 648, 649, 650
28	705, 707
14	501, 503



- LEGEND**
- COMMON ELEMENT
 - LIMITED COMMON ELEMENT
- NOTES:**
- 1) BUILDING DIMENSIONS SHOWN ON UNIT FLOOR PLANS ARE PER PLANS PROVIDED.
 - 2) THIS SURVEY IS SUBJECT TO ANY AND ALL EASEMENTS AND ENCUMBRANCES, BOTH RECORDED AND UNRECORDED.
 - 3) AREAS OUTSIDE OF BUILDINGS ARE COMMON ELEMENTS UNLESS OTHERWISE NOTED.
 - 4) ON THE MAP OR IN THE CONDOMINIUM DECLARATION, DECK, STAIRS, DRIVEWAYS AND WALKS DIRECTLY CONNECTED TO A UNIT ARE COMMON ELEMENTS AND DO NOT SURVEYED UNIT DIMENSIONS AS SET FORTH IN THE CONDOMINIUM DECLARATION.



BIRENKOTT SURVEYING INC.
 PREPARED BY: DANIEL V. BIRENKOTT
 500 N. BRUNNEN STREET
 SUN PRAIRIE, WI 53200
 (608) 837-7000
 (608) 837-7000

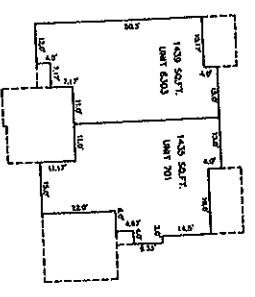
COVERED BRIDGE CONDOMINIUM APPENDUM TWO

A CONDOMINIUM PLAT, DANE COUNTY, WISCONSIN

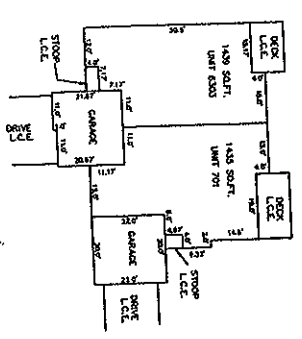
001901

RECORDED IN VOLUME _____ OF CONDOMINIUM
 PLATS ON PAGE _____ AS DOCUMENT NUMBER _____

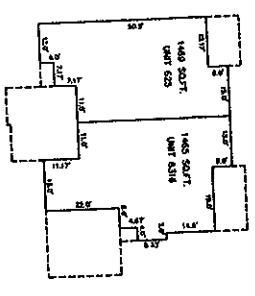
BASEMENT PLAN
 (PER BUILDING PLAN) SCALE 1"=30'



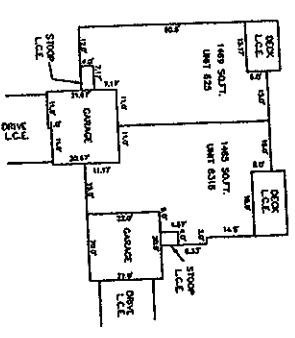
LOT 39



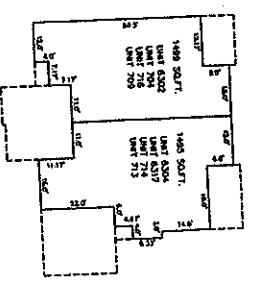
BASEMENT PLAN
 (PER BUILDING PLAN) SCALE 1"=30'



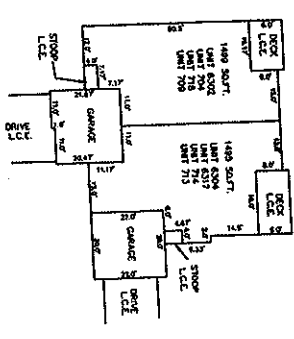
LOT 102



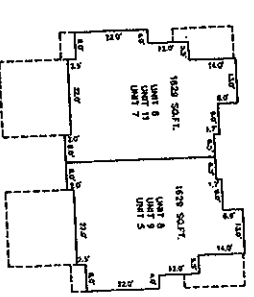
BASEMENT PLAN
 (PER BUILDING PLAN) SCALE 1"=30'



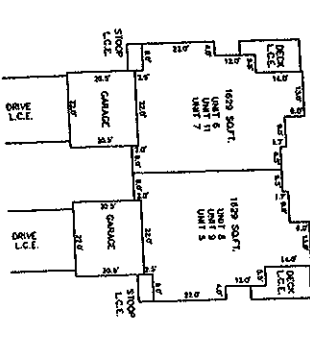
LOTS 29, 32, 35, 90



BASEMENT PLAN
 (PER BUILDING PLAN) SCALE 1"=30'

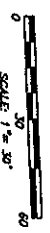


LOTS 24, 25, 26



FIRST FLOOR PLAN
 (PER BUILDING PLAN) SCALE 1"=30'

LOT NUMBER	UNIT NUMBERS
1	801 - 903
2	701 - 803
3	601 - 703
4	501 - 603
5	401 - 503
6	301 - 403
7	201 - 303
8	101 - 203
9	101 - 203
10	101 - 203
11	101 - 203
12	101 - 203
13	101 - 203
14	101 - 203
15	101 - 203
16	101 - 203
17	101 - 203
18	101 - 203
19	101 - 203
20	101 - 203
21	101 - 203
22	101 - 203
23	101 - 203
24	101 - 203
25	101 - 203
26	101 - 203
27	101 - 203
28	101 - 203
29	101 - 203
30	101 - 203
31	101 - 203
32	101 - 203
33	101 - 203
34	101 - 203
35	101 - 203
36	101 - 203
37	101 - 203
38	101 - 203
39	101 - 203
40	101 - 203
41	101 - 203
42	101 - 203
43	101 - 203
44	101 - 203
45	101 - 203
46	101 - 203
47	101 - 203
48	101 - 203
49	101 - 203
50	101 - 203
51	101 - 203
52	101 - 203
53	101 - 203
54	101 - 203
55	101 - 203
56	101 - 203
57	101 - 203
58	101 - 203
59	101 - 203
60	101 - 203
61	101 - 203
62	101 - 203
63	101 - 203
64	101 - 203
65	101 - 203
66	101 - 203
67	101 - 203
68	101 - 203
69	101 - 203
70	101 - 203
71	101 - 203
72	101 - 203
73	101 - 203
74	101 - 203
75	101 - 203
76	101 - 203
77	101 - 203
78	101 - 203
79	101 - 203
80	101 - 203
81	101 - 203
82	101 - 203
83	101 - 203
84	101 - 203
85	101 - 203
86	101 - 203
87	101 - 203
88	101 - 203
89	101 - 203
90	101 - 203
91	101 - 203
92	101 - 203
93	101 - 203
94	101 - 203
95	101 - 203
96	101 - 203
97	101 - 203
98	101 - 203
99	101 - 203
100	101 - 203

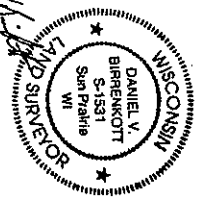


SCALE 1"=30'

LEGEND
 C.C. COMMON ELEMENT
 L.C.E. LIMITED COMMON ELEMENT

- NOTES:**
- 1) BUILDING DIMENSIONS SHOWN ON UNIT FLOOR PLANS ARE PER PLANS PROVIDED.
 - 2) THIS SURVEY IS SUBJECT TO ANY AND ALL EASEMENTS AND AGREEMENTS, BOTH RECORDED AND UNRECORDED.
 - 3) ALL AREAS SHOWN ON THIS SURVEY ARE COMMON ELEMENTS UNLESS OTHERWISE NOTED.
 - 4) UNIT AREAS ARE APPROXIMATE AND NOT SURVEYED UNIT BOUNDARIES AS SET FORTH BY THE CONDOMINIUM DECLARATION.

[Signature]
 7-1-2001



BIRRENKOTT SURVEYING INC.
 871 W. WISCONSIN STREET
 MADISON, WISCONSIN 53703
 (608) 837-1001
 (608) 837-1001
 (608) 837-1001

SHEET 6 OF 6
 OFFICE MAP NO. 0008928

001902

TAX PARCEL NO.'S

<u>UNIT #</u>	<u>PARCEL #</u>
505	251-0710-111-1803-3
507	251-0710-111-1804-1
509	251-0710-111-1805-9
511	251-0710-111-1806-7
601	251-0710-111-1807-5
603	251-0710-111-1808-3
605	251-0710-111-1809-1
607	251-0710-111-1810-8
609	251-0710-111-1811-6
611	251-0710-111-1812-4
613	251-0710-111-1813-2
615	251-0710-111-1814-0
617	251-0710-111-1815-8
619	251-0710-111-1816-6
621	251-0710-111-1817-4
623	251-0710-111-1818-2
620	251-0710-111-1857-0
618	251-0710-111-1858-8
616	251-0710-111-1859-6
614	251-0710-111-1860-3
612	251-0710-111-1861-1
610	251-0710-111-1862-9
608	251-0710-111-1863-7
606	251-0710-111-1864-5
604	251-0710-111-1865-3
6321	251-0710-111-1866-1

<u>LOT #</u>	<u>PARCEL #</u>
14 - 29	251-0710-111-0917-3
102 - 108	251-0710-111-1014-6
90 - 91	251-0710-111-1110-2
32-39	251-0710-111-0615-3